

Human HLA-A*02:01&B2M&Survivin (LMLGEFLKL) Tetramer Protein

Cat. No. MHC-HM412T

Description

Source	Recombinant Human HLA-A*02:01&B2M&Survivin (LMLGEFLKL) Tetramer Protein is expressed from HEK293 with His tag and Avi tag at the C-Terminus, tetramer is assembled by biotinylated monomer and streptavidin. It contains Gly25-Thr305(HLA-A*02:01), Ile21-Met119(B2M) and LMLGEFLKL peptide.
Accession	A0A140T913(HLA-A*02:01)&P61769(B2M)&LMLGEFLKL
Molecular Weight	The protein has a predicted MW of 258 kDa. Due to glycosylation, the protein migrates to 260-265 kDa under Non reducing (N) condition based on Bis-Tris PAGE result.
Endotoxin	Less than 1EU per ug by the LAL method.
Purity	> 95% as determined by Bis-Tris PAGE > 95% as determined by HPLC

Formulation and Storage

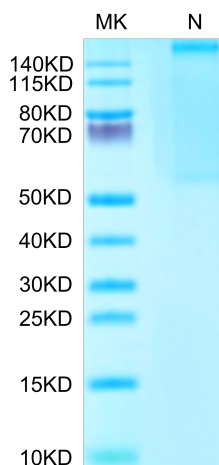
Formulation	Lyophilized from 0.22µm filtered solution in PBS (pH 7.4). Normally 8% trehalose is added as protectant before lyophilization.
Reconstitution	Centrifuge the tube before opening. Reconstituting to a concentration more than 100 µg/ml is recommended. Dissolve the lyophilized protein in distilled water.
Storage	-20 to -80°C for 12 months as supplied from date of receipt. -80°C for 3 months after reconstitution. Recommend to aliquot the protein into smaller quantities for optimal storage. Please minimize freeze-thaw cycles.

Background

Survivin (also known as BIRC5) is an evolutionarily conserved eukaryotic protein that is essential for cell division and can inhibit cell death. Normally it is only expressed in actively proliferating cells, but is upregulated in most, if not all cancers; consequently, it has received significant attention as a potential oncotherapeutic target.

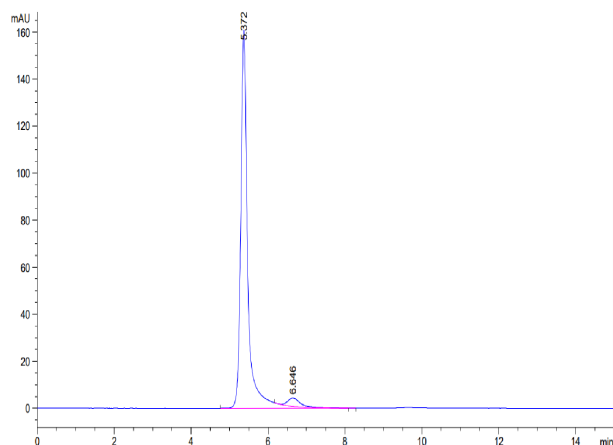
Assay Data

Bis-Tris PAGE



Human HLA-A*02:01&B2M&Survivin (LMLGEFLKL) Tetramer on Bis-Tris PAGE under Non reducing (N) condition. The purity is greater than 95%.

SEC-HPLC



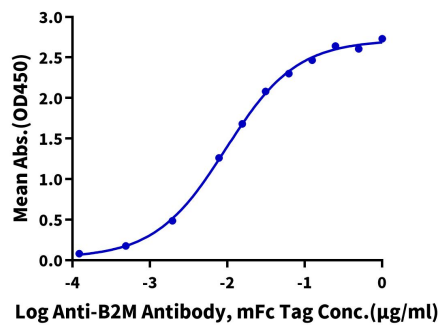
The purity of Human HLA-A*02:01&B2M&Survivin (LMLGEFLKL) Tetramer is greater than 95% as determined by SEC-HPLC.

Assay Data

ELISA Data

Human HLA-A*02:01&B2M&Survivin (LMLGEFLKL) Tetramer, His Tag ELISA

0.05µg Human HLA-A*02:01&B2M&Survivin (LMLGEFLKL) Tetramer, His Tag Per Well



Immobilized Human HLA-A*02:01&B2M&Survivin (LMLGEFLKL) Tetramer, His Tag at 0.5µg/ml (100µl/well) on the plate. Dose response curve for Anti-B2M Antibody, mFc Tag with the EC50 of 9.5ng/ml determined by ELISA (QC Test).